

SCRABBLE®

SCRABBLE® is a trademark of Hasbro in the US and Canada. ©2016 Hasbro. Distributed by Tribune Content Agency, LLC. All rights reserved.

E1I1J3T1N1W4

A1E1E1O1T1N1B3

E1E1U1S1S1C3D2

E1I1O1R1L1P3M3

Triple Word Score

1st Letter Double

RACK 1

RACK 2

RACK 3

RACK 4

PAR SCORE 140-150

BEST SCORE 231

FOUR RACK TOTAL

TIME LIMIT: 20 MIN

DIRECTIONS: Make a 2- to 7-letter word from the letters in each row. Add points of each word, using scoring directions at right. Finally, 7-letter words get 50-point bonus. "Blanks" used as any letter have no point value. All the words are in the Official SCRABBLE® Players Dictionary, 5th Edition.

Answer below

For more information on tournaments and clubs, email NASPA - North American SCRABBLE® Players Association info@scrabbleplayers.org. Visit our website - www.scrabbleplayers.org. For puzzle inquiries contact scrags@gmail.com.

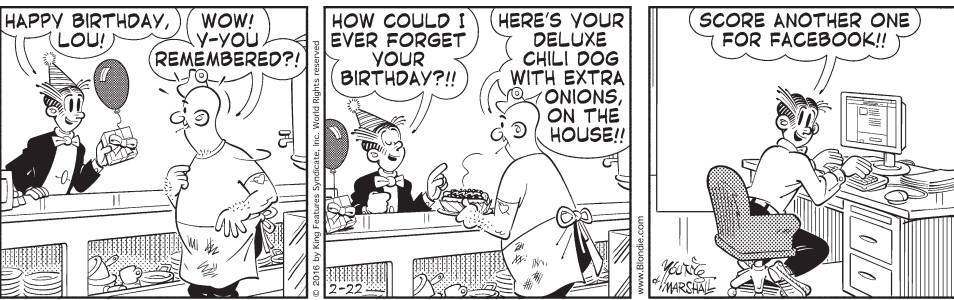
©2016

©2016

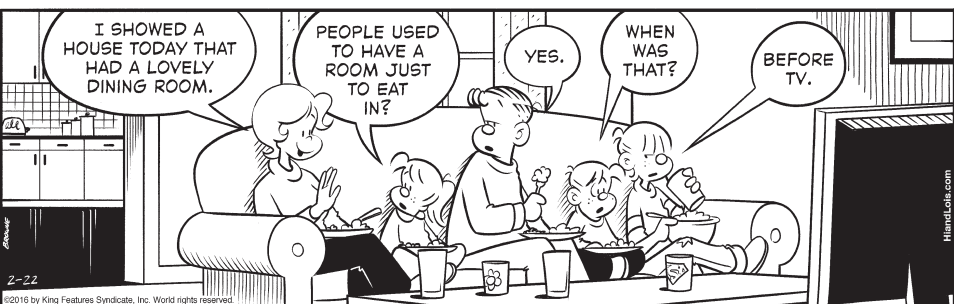
NON SEQUITUR by Wiley



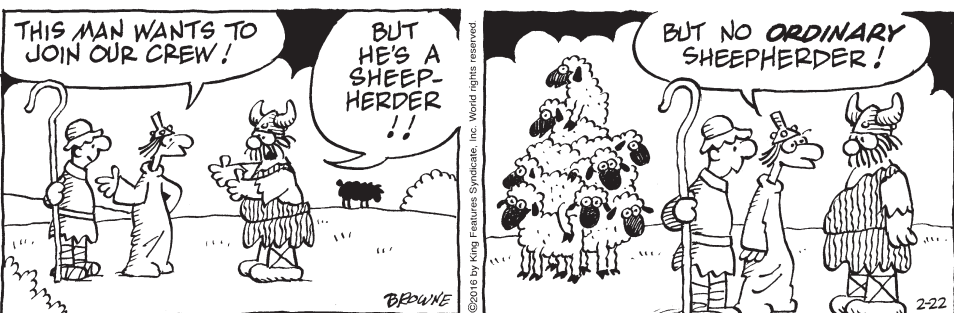
BLONDIE by Dean Young and John Marshall



HI & LOIS by Chance Browne



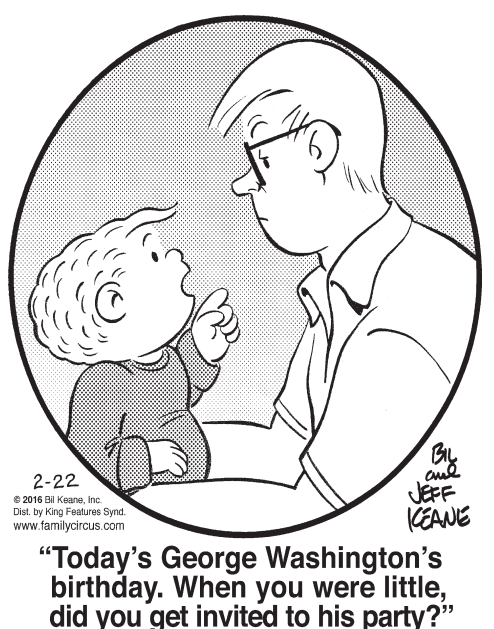
HAGAR THE HORRIBLE by Chris Browne



DENNIS THE MENACE by Hank Ketcham



THE FAMILY CIRCUS by Bil Keane



JUMBLE

Unscramble these four Jumbles, one letter to each square, to form four ordinary words.

RIYAN

SOTHI

SNURKH

PREPEP

Print your answer here:

Answers tomorrow

Saturday's

Jumbles: WIPER DOUBT WISDOM TANGLE

Answer: The drinks at the undersea bar were — WATERED DOWN

©2016

©2016

Recurrent TIAs cause for great concern

Dear Dr. Roach: I have a 69-year-old woman friend who has been having TIAs for over a year. She averages one a week. Doctors are puzzled.

They last 15 to 20 minutes, with drooling and numbness on the left side. I am very worried about what is going to happen.

Is this normal for an older person? Aren't TIAs a prelude to a major stroke? What do you think should be done? — *Anon.*

A transient ischemic attack is a temporary loss of function of the nervous system. It is similar to a stroke, but a stroke causes permanent damage to cells of the nervous system. (In a stroke, symptoms may improve despite permanent damage, and this is due to the nervous system's ability to find new ways to perform the functions of damaged areas.)

A TIA is worrisome in

DR. KEITH ROACH
TO YOUR GOOD HEALTH

itself, since even a brief episode of poor blood flow to the brain may cause permanent damage.

However, TIAs are worrisome also because they predict a higher likelihood of developing a stroke, which can range from minor damage to catastrophic loss of brain function and death.

TIAs and strokes unfortunately are all too common, but I would never characterize them as normal.

A TIA should be looked at as an emergency: One colleague of mine said it's "chest pain of the brain," and people with TIAs should be rapidly evaluated.

The evaluation can be complex, but generally includes imaging studies of the brain, usually an MRI or CT scan, and an evaluation of the blood

flow to the brain by MRA, CTA or ultrasonography. Often, the blood vessels of the neck and chest need evaluation, as does the heart itself; it can send blood clots to the brain, causing recurrent TIA.

Abnormal heart rhythm, such as atrial fibrillation, can be a cause for TIA.

I don't know how extensive the evaluation of your friend has been thus far.

If she already has had an extensive workup done, it is reasonable to consider some less-common possibilities. Sometimes seizures can appear clinically similar to TIAs, as can multiple sclerosis and other related conditions.

If your friend would like, perhaps you could accompany her to her next visit, so you can get a better idea of how thorough her medical team has been, and consider a fresh look. Continued TIAs are very worrisome to me.

Dear Dr. Roach: I'm 85 years old, and my doctor wants me to go for another bone scan. I'm reluctant to go through with the test. At my age, I don't think medication will do me any good. I take calcium and vitamin D. — *E.C.*

I do understand when patients tell me that they don't want to undergo unnecessary tests and procedures due to their age, but some tests make more sense than others.

The reason I would recommend that you follow your doctor's advice in this case is that the test itself is simple and not dangerous, and because it's fairly likely that at age 85, you may have osteoporosis. If you do have osteoporosis, there is effective treatment (both medication and not), even at age 85, that will reduce your likelihood of a fracture. I have seen fractures lead to long-term suffering too many times.

Bridge

by Frank Stewart

Sound technique

Intelligence is like underwear: You need it, but there is no reason to show it off. You don't have to make spectacular plays to be regarded as a good player. Consistently good technique will do.

At 3NT South won the first heart with the king; if he ducked the first trick, the defenders might shift to spades. South then led a club, and East rose with his ace to return a heart. Declarer played low, won the next heart, led a club to dummy and let the eight of diamonds ride, but West took the king and cashed two hearts. Down one.

UNSOUND

South's technique was unsound. South should take a diamond finesse at Trick Two. When West wins to continue hearts, South wins the third heart and forces out the ace of clubs. He wins East's spade return, runs the clubs and leads another diamond, making an overtrick. South must hope West has only one entry. South's play would have worked if that entry had been the ace of clubs. The correct play wins if West has either diamond honor.

What do you say?

ANSWER: If you judge the hand too strong for a raise to two hearts, respond one spade. If partner rebids two hearts, raise to three. If he bids two of a minor suit, jump to three hearts, invitational. I would respond one spade with A 9 8 5 2, Q 9 8, 5 2, A 8 4. With the actual hand, I wouldn't like the side queens and might settle for a timid single raise.

South dealer
Both sides vulnerable

NORTH
♠ K 7 3
♥ K 7
♦ 10 8 7 6
♣ K 10 9 5

WEST
♠ J 10 4
♥ J 10 5 4 2
♦ K 4 2
♣ 7 3

EAST
♠ Q 9 8 5 2
♥ Q 9 8
♦ Q 5
♣ A 8 4

SOUTH
♠ A 6
♥ A 6 3
♦ A J 9 3
♣ Q J 6 2

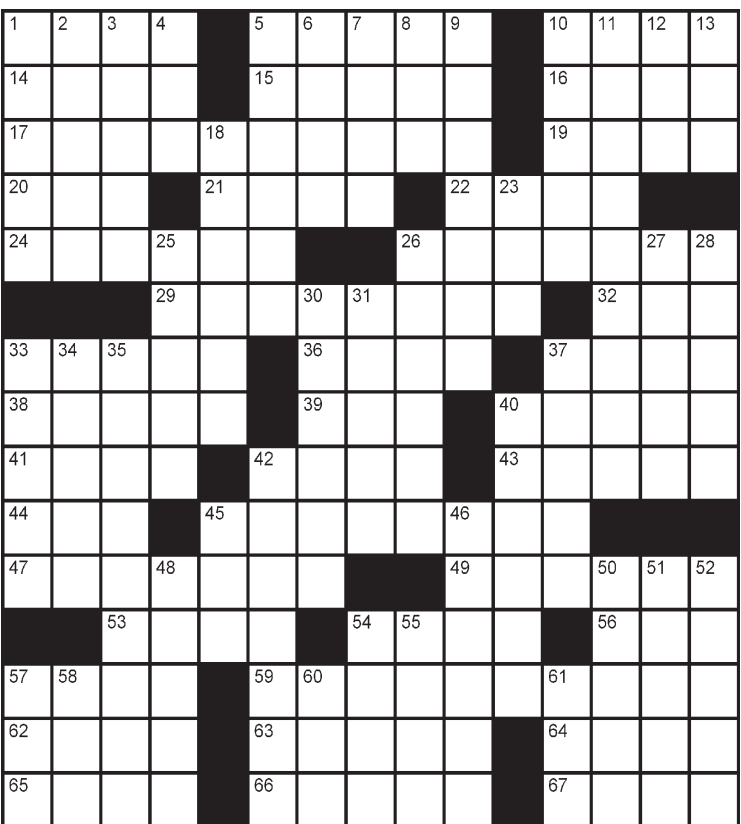
South 1 NT West Pass North 3 NT East All Pass

Opening lead — ♥ 4

©2016 Tribune Content Agency, LLC

The Daily Crossword Edited by Wayne Robert Williams

- ACROSS**
- Oldsters' grp.
 - Washington's successor
 - Wage-slave's refrain
 - Vivacity
 - "Star Trek" co-star
 - Puget Sound whale
 - Parlor
 - Ranked contender
 - NASA's ISS partner
 - Cheers for the matador
 - Walk the carpet
 - Narrate
 - Leaves in the lurch
 - Public lavatory
 - Balderdash!
 - Quality of taste
 - Ship's tiller
 - Language subtlety
 - Reheats
 - Goose the gas
 - "Sorry Wrong Number" prop
 - Code name?
 - Harassed persistently
 - Hire a different crew
 - Angeles or Alamos
 - Rest Area building
 - Put in chains
 - Takes an oath
 - Decorate again
 - Atlas section



Visit: ADailyCrossword.com

2/22

Saturday's Puzzle Solved														
A	C	A	D		B	A	S	E	L		O	L	A	N
L	O	U	I	S	A	M	A	Y	A	L	C	O	T	T
A	N	T	I	D	E	P	R	E	S	S	A	N	T	S
E	G	O		S	R	O		L	E	T		G	O	B
	R	M	A		S	U	P	E	R		S	I	R	
B	A	A	L	S		L	U	T		H	A	S	N	T
A	T	T	A	I	N	E	R		F	A	L	L	E	R
S	U	I		M	I	S	P	L	A	Y		A	Y	E
A	L	C	A	P	P		L	O	A	D	I	N	G	S
L	A	P	I	S		L	E	V		N	O	D	E	S
	T	I	M		R	E	S	E	W		U	S	N	
T	I	L		S	U	M		S	O	S		O	E	R
R	O	O	M	T	E	M	P	E	R	A	T	U	R	E
I	N	T	E	R	R	O	G	A	T	I	O	N	A	L
P	S	S	T		S	N	A	T	H		I	D	L	Y

DOWN

- Better trained
- Move upward
- Beau number two
- Luau fare
- Viewpoints
- Really dreadful
- Famous cookie maker
- Dairy farm sound
- Outward sign
- Cavaradossi's love
- Backstage lounge
- Coat a cake
- Rage
- Record keepers
- Militarize
- Edibles
- Less wild
- Part of ABM
- Hanks and Brokaw
- Frets
- Disorderly jumble
- Olfactory stimulation
- Problem fixer
- Prima __
- Dutch genre painter
- Royal seat
- Marsh growth
- Marshy lowland
- Spelling of TV
- Reporters' hangout
- School paper?
- Hawklike?
- Uprisings
- Crackers
- Basketry material
- City on the Aire
- Isolated
- Public disturbances
- Big trucks
- Summit
- Impose a bias upon
- Ship's tail
- London W.C.
- Cereal grain
- Computer acronym

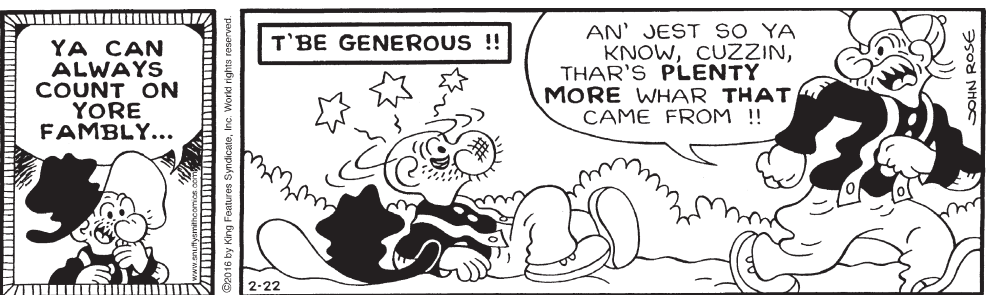
Scrabble Solution

PAR SCORE 140-150	TOTAL 231
RACK 4 = 62	RACK 3 = 60
RACK 2 = 8	RACK 1 = 101

BEETLE BAILEY by Mort Walker



SNUFFY SMITH by Fred Lasswell



Conceptis Sudoku

	7				1			
5		1		8		6		3
	3		9		6		4	
		7	1		9	4		
	1						2	
		6	4		5	8		
	5		7		2		8	
8		4		6		1		2
	6						5	

Difficulty Level ★

Sudoku is a number-placing puzzle based on a 9x9 grid with several given numbers. The object is to place the numbers 1 to 9 in the empty squares so that each row, each column and each 3x3 box contains the same number only once. The difficulty level of the Conceptis Sudoku increases from Monday to Sunday.

Yesterday's Puzzle Solved

6	2	1	5	4	7	9	3	8
4	9	3	2	6	8	1	5	7
7	5	8	1	3	9	2	4	6
9	3	2	4	8	6	7	1	5
1	8	7	3	9	5	6	2	4
5	6	4	7	2	1	8	9	3
2	1	5	6	7	4	3	8	9
8	4	6	9	1	3	5	7	2
3	7	9	8	5	2	4	6	1

Difficulty Level ★★