



MILLINOCKET 4 BR 2 BA w/gar., 1st flr BR or DR, New wins. In town, near many amenities. \$25,000 The Nadeau Bragdon Team, ERA Dawson Bradford, 723-1441 / 947-3363



OLD TOWN 3 BR/1 BA Ranch on corner lot w/deck. Hdwd flrs throughout. With in walking distance to the UMO bike trail, park, playground, schools and shopping. \$109,900 Nadeau/Bragdon Team, ERA Dawson, 723-1441/947-3363



ORRINGTON 2 BR/1.5 BA 9.8 ac, new countertops, 12 x 12 family/office or 3rd bedroom. \$175,000 appt/944-8186



OTIS Custom built waterfront. Spacious rms, Central A/C, 3BR, 4.5BA, sandy beach & dock sys. lg. garage has rm has heat & a/c. \$749,900 Kurtis & Carissa Marsh, Realty of Maine, 942-6310



PRESQUE ISLE - BY OWNER - 3 BR, 2 full bath, beautiful solid home on 3 acres viewing Aroostook River. Lg. kit., lovely lg. DR w/built-in china cabinet, beautiful LR w/fireplace, walk-in storage & hdwd flrs, small office, full bath, BR on 1st flr. Lg. master BR & 2nd BR w/lgs. closets & storage on 2nd flr. Easy access to attic for extra storage. Basement in exc. shape. \$129,000. 764-4290



SMITHFIELD Ranch w/Belgrade Lakes North Pond access. Spacious w/wrap around deck. 3 BR plus Den/Office/Mud Rm. 2 car gar. w/workshop. \$125,900 Jean Jenkins, 745-4522 Vacationland Realty



T4 INDIAN PURCHASE TWP 2 BR/1 BA Amazing beach, sand filled with .65 acs & 198 ft water frontage. Camp has open living/kit, 2 BR, front enclosed porch, bathrm w/shower w/septic/leach field. \$179,900 The Nadeau / Bragdon Team, ERA Dawson, 723-1441 / 947-3363



T4 INDIAN PURCHASE TWP 4 BR/1.5 BA, 109 ft water frontage on South Twin Lake. 6 mis from downtown Millinocket. 3BR/1BA, open kit/LR, enclosed porch. \$179,900 The Nadeau / Bragdon Team, ERA Dawson, 723-1441 / 947-3363



T4 INDIAN PURCHASE TWP Family camp on waters edge w/205 ft water frontage on South Twin Lake. 6 mis from downtown Millinocket. 3BR/1BA, open kit/LR, enclosed porch. \$179,900 The Nadeau / Bragdon Team, ERA Dawson, 723-1441 / 947-3363



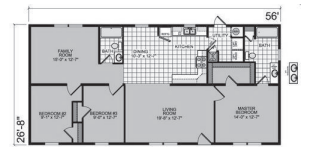
MODULAR, DOUBLE-WIDE, SINGLE-WIDE
Land/Home Pkgs., Park Space, Quality Used Homes - Financing Avail. - MSHA Free delivery & set-up. Rte. 1A, Holden 989-1070 or 800-287-1071



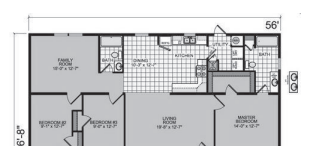
NEW 2015 EAGLE RIVER 1,280 sqft, 3 BR 2 BA. SAVE \$5,000. Was \$74,714 NOW ONLY \$69,714! Call 989-2337. Web www.showcasehomesofmaine.com!



REDMAN 2016 24402 3 BR 2 BA 1,173 SF for only \$71,913 delivered & set up! Call 989-2337. Web www.showcasehomesofmaine.com!



REDMAN 2016 25601 3 BR 2 BA 1,493 SF for only \$80,991 delivered and set up! Call 989-2337 or andy@showcasehomesofmaine.com.



REDMAN 2016 25601 3 BR 2 BA 1,493 SF for only \$80,991 delivered and set up! Call 989-2337 or andy@showcasehomesofmaine.com.

Shore Property 330

HANCOCK Cottage 2 BR/1 BA Propeller Point on West Lake for sale by owner. Serious inquiries only. softailcustom@roadrunner.com



T10 R6 WELS 12.3 ac. 2007 cabin, pvt. loc., spring on site which stays unfrozen all winter! \$79,900 Scot, 538-1765 www.northernmainelandbroker.com

Auto Dealers 355

Garrett's Auto Sales
WE FINANCE 989-6777
WWW.GARRETSAUTO.COM
EZ CAR CREDIT! YOU'RE APPROVED!

12 Chevy Malibu 2LT 4dr AT 104K
10 Buick LaCrosse CXL 4dr AT 133K
09 Mitsubishi Galant 4cyl 4dr AT 154K
08 Chevy Equinox LT AWD V6 AT 159K
07 Chevy Tahoe LT 4WD AT V8 150K
07 Chevy Envoy 4dr AWD AT 139K
06 Toyota Highlander LTD AT V6 139K
05 GMC Envoy SLT 4WD AT 122K
04 Nissan Maxima SE 4cyl 4dr AT 107K
2 mi. fr/Brewer Wal-Mart, RT1A, Holden

Cars 365

GMC 2004 ENVOY SLE 4 X4 121,000 mi. New Sticker, good shape. \$3,000
1964 Chevy Corvair Monza, 52,000 mi. Maryland Car \$3,500 478-1458



JEOP 06 CMNDR 4WD V6 AT 129K
EZ CAR CREDIT! YOU'RE APPROVED!

JEOP 2006 LIBERTY SPORT Red/Tan, 64,000 Mi, Private Party, Excellent condition. Serious inquiries only. Please leave message. \$8,250 207-262-8911

NISSAN 1993 300ZX 2+2 2-door T top, 6 cyl, Auto, 27,500 Mi, Excellent condition. By Owner, Appraised at \$22,700. Asking \$16,500. Call Kevin 207-768-1123



PONTIAC 08 GR. PRIX GXP V8 AT 127K
EZ CAR CREDIT! YOU'RE APPROVED!



SUBARU 08 OUTBACK AWD AT 142K
EZ CAR CREDIT! YOU'RE APPROVED!

Vans/Minivans 370



CHRYSLER 2014 TOWN & COUNTRY Blue/Black, Exc cond. Very Cln Stow/Go Factory wrnty A/C DVD new tires state inspection \$18,450 207-745-5195

DODGE - 2000 FLORIDA Grand Caravan Zero rust, all power options, very nice, 165k mostly hwy. Needs brakes. Reduced to \$2,000 Call for pictures 226-7540.

Sport Utility 380



CHEVY SILVERADO 05 4WD AT V8 180K
EZ CAR CREDIT! YOU'RE APPROVED!

Pickups/4 Wheel Drives 385

FORD 2005 F250 XLT 4WD, diesel, auto, ex. condition never been used to plow 104,000 mi. \$7,000 firm 944-3886

Tractors/Trailers/Trucks 390

FORD 2001 F-650 XLT 60,223 Mi, 3116 Engine with Auto Trans, flatbed dump with byd hopper sender, fenco plow and wing. \$12,500 or offer. 991-2391

TRUCK & CONTRACTORS INSURANCE
Save hundreds! 207-848-3326 or 1-800-365-7440. Russell Patten Insurance.

Transportation General 351

2007 TOYOTA CAMRY LE 4-door sedan 4-cyl, one owner 62,000 miles cell-735-4902, moon roof package, \$7500 207-827-7556

Sports/Recreation 450

GREAT BUY!



2001, 36FT CLASS A, MOTOR HOME High end motor home. 2 large slide outs, V-10 ford engine, low miles, satellite dome new tires (cost \$2,000) Never seen snow. \$21,500 207-944-2115

2009 ROCKWOOD WINDJAMMER TRAVEL TRAILER Asking \$9,000, buyer can have campsite at Balsam Campground free for the remainder of the season. 336-314-5429 or site 56.

2011 HEARTLAND SUNDANCE 2800RL 5TH WHL RV Offered for sale due to a death in the family is a so lightly used 32' 5th whl RV with 2 slides that some interior items still have the plastic from the factory on them. Has been towed less than 800 miles by 2 non smoking mature responsible adults. Speced for winter use. Current owners purchased new with intentions of going south in the late fall for a few months. Unfortunately these plans are now not to be. The list of options are too many to list in this add. Please go to www.rvt.com and search for 2011 Heartland Sundance 5th whl RV. Call or text for more info. \$24,900.00 207-227-4190

HOLIDAY RAMBLER 2003 Neptune 38', air ride, diesel pusher, 300 Cummings, 29,243 miles, 2 slides, non smoker, no pets. **Now \$45,500.** 207-223-4922



MOTOR HOME 2005 gulfstream 36' motorhome 2 slides, new couch & awning. like new, no smoke or pets \$39,000.00 OBO Call: 356-8255

SNOWMOBILE Ski Doo, 2011 Summit 800 E Tec, 163 inch x 2.25 Paddle track. Carbon fiber skid plates (10 inch skis), two up seat, many extras. Light Use, Black. \$7,000 207-356-8699

WILDERNESS 5TH WHEEL CAMPER 1998 27', gas/elec. refrigerator, battery/elec. lights, 13' slide out, 17' awning; screen room w/solid door, wooden steps, gas light, solar panel. Very clean, lots of storage. Very low hauling mileage. Asking \$7,000. 207-827-7066

Agriculture General 505

AROOSTOOK BEEF COMPANY IS NOW DELIVERING
our locally raised beef anywhere in the state of Maine! Our Beef CSA program is available in Full Shares (20 pounds) and Half Shares (10 pounds), and will be delivered once per month. Each share will come with a variety of different cuts, so you will never get the same package twice. And since we only opt for the best cuts during the processing of our Black Angus beef, our CSA is sure to please the palate! If you would like a larger quantity, we also offer bulk packaging of quarters, sides and wholes. For more information, or to make an order, please visit us online at www.aroostookbeef.com, our Facebook page, Aroostook Beef Company, or call us at 207-316-4733.

QUALITY HAY FOR SALE
Timothy, Mixed or Fine avail.
\$3.50 per bale
Call Russell at 944-8756 or 848-3141

Farmers Market 506

ADAMS STRAWBERRY ACRES Route 15, Corinth. Pick your own Raspberries and Blueberries daily. 207-285-3324

RASBERRIES U-Pick \$2.50 pint 22 Marsh Rd. Corinth closed Sundays 207-285-7764

Merchandise General 605

FOR SALE 1947 16 ft. old town square stern boat like new. Various Hay Making Equipment- Round Baler 944-3763

LATHE Victor 14 x 40, gear head w/read out and tooling. Exc. cond. \$4,500. 207-783-2811 or 207-316-9467

LIVING ROOM SET 4 piece; couch, love seat, chair and ottoman. Beige, leaf print. Very large set. \$2,000 207-942-1897



LIFE IONIZER M11 UC PRODUCES PURE DISTILLED AND ALKALINE WATER
Life Ionizer water ionizers, produce unlimited purified water, unlimited hydrogen rich alkaline water, and healthy acidic water. no more bottled water/ plastic waste. removes pesticides from fruits and veggies, chemical free disinfectant. Lifetime Warranty we pay shipping, see our site for more details and our product ambassador programs; great for HOA, PTA, Clubs, & Schools www.lifeionizeroftexas.com https://youtu.be/HXnpYUvXcg0 \$3,497 210-439-8700

Fuel & Firewood 610

WOW!
DYSARTS
FIREWOOD - Clean, high quality, cut & split, Winter Cut Wood. You pick up or delivered, \$219/cord, 3 cord min., Envi Block, \$289/ton Wood pellets avail. 942-4878 ext. 166

FIREWOOD - excellent firewood, cut, split & delivered. \$190/cord. 731-1031 or 944-4821

FIREWOOD Green Firewood For Sale. Long length or 8ft Hardwood. \$120-\$130 cord. 207-290-5869

GREAT BUY!

HARDWOOD SLABS Peavey Mfg. Co. 207-843-7861. Approx. half cord per rack. You load. \$20/rack. 6am-4pm, M-F

MARK EASTMAN FIREWOOD
Selective wood cutting, split dry, \$230/cord. 394-2905

SUMMER SPECIAL
Green/Cut/Split/Delivered \$200; kiln-dried \$240. 965-2691

Pets 620

ABSOLUTELY GORGEOUS! PUPS:
Shih Tzu, Morkie, Pugs, Cockachon, Havanese, Labs, Bichon, Yorkies, Boston, Goldendoodles, Pom, Schnauzer, Cockapoo Frenchie.
KITTENS
Himalayan
Pawz & Clawz Petz
Windham, Maine * 892-5366
www.pawzclawzpetz.com
Like us on Facebook 207-892-5366

Wanted To Buy 625

CALL NOW!

ALWAYS BUYING ATTIC, BARN, Basement, Garage, Storage, House Contents. Call today, 716-6763

CALL NOW!

ANTIQUES WANTED - From One Item To Entire Estates, Firearms, Gold & Silver, Over 40 yrs exp. **Merry's Antiques, 207-338-3371 or 207-323-0304**

ATTENTION!
ATTIC, GARAGE, BARN, GUNS
Attic, garage, barn, basement. We buy contents, estates & guns. 649-1976

Things To Do 725

PARTICIPANTS NEEDED FOR UNIVERSITY OF MAINE RESEARCH. The VEMI lab is currently looking for active individuals between 60 to 80 years of age. This study is one 30 minute session, looking at how people learn new places. Participants will use a desktop computer and are paid \$20 for their time. If interested, please contact Chris at christopher.r.bennett@maine.edu or his phone number below. Our lab is located at Carnegie Hall on the UMaine Orono campus. 732-692-4665

General Notices 740

HONEYBEE hives & equipment for sale, pollination services, bee removals, beekeeping training by The Bee Whisperer. (207) 299-6948.



PENOBSCOT EYE CARE IS PLEASED TO ANNOUNCE Penobscot Eye Care is both pleased and excited to announce the addition of Alyssa J. Verrill, O.D. to our optometric staff. Dr. Verrill is a 2016 graduate of Pennsylvania College of Optometry. Dr. Verrill got her start at Penobscot Eye Care as an ophthalmic technician while pursuing a Bachelors Degree in Biology at the University of Maine in Orono. She attended graduate school at The Pennsylvania College of Optometry at Salus University, earning her Doctorate in Optometry in 2016. She has completed clinical rotations in primary care, contact lens, pediatrics, and ocular disease. She is a member of the International Optometric Honor Society, Beta Sigma Kappa, the Maine Optometric Association, and the American Optometric Association.

Dr. Verrill resides in Winterport with her husband. They enjoy singing together as well as camping, fishing, and exploring the beautiful Maine outdoors with family and friends

PLACE YOUR AD
207-990-8020



THE EARLY BIRD GETS THE WORM

IT'S YARD/GARAGE SALE TIME!

Place your onling & print **YARD/GARAGE SALE CLASSIFIED ADS** through our self-serve website **ANYTIME, ANY DAY** or call us toll free in Maine at 1-800-432-7964.

classifieds.bangordailynews.com

BDN