



ELLSWORTH 2 BR/1 BA on 11AC island on premiere lake. short kayak, canoe, or boat ride from mainland access lot and 3.23AC mainland shore front lot incl. \$339,000 Jeff Clark RE/MAX Hills & Harbors Realty Office: (207) 664-0434



GREENBUSH 1 flr. living, updated, heat pump gives cheap heat & A/C. New paint, boiler & on demand HW, newer metal roof, spacious backyard. \$114,900 Kurtis & Carissa Marsh, 942-6310



HAMPDEN 3 BR/2 BA custom built Log Home, sunrm, f.p. Daycare Ctr w/great income, solar panels, in ground pool, exercise rm. \$250,000 Jean Jenkins, 745-4522 www.jeanjenkins.com



HAMPDEN 3BR/2BA, RR, .91 acres, New roof in July, heats easy, \$3,000 flooring/update allowance \$158,000 Keith Ocicpka, Realty of Maine, 207-356-9949



HAMPDEN 5 BR/3 BA w/att 2 car gar. Lg back yard w/ gazebo & fountain. Updated incl. new furnace, vinyl wins. & siding. \$164,900, Kurtis & Carissa Marsh, Realty of Maine 942-6310



HAMPDEN Newly renovated 3 bedroom ranch on 4 acres in Hampden. Home sets back off from road to have that country feeling. Priced at \$159,900. John Voye, 852-6056, Realty of Maine



HARTLAND ACADEMY 21,600 s.f. for residential or commercial use, 2.3 acres, panoramic views, sunny exposure, hardwood floors, new roof, electrical upgrades, outbuilding, daylight basement, 500 ft. road frontage. Maintenance free exterior. Endless possibilities. \$79,900. Possible owner financing. Call 284-5553 evenings.



HERMON 3 BR/2 BA open concept, MBR suite, finished lower level, 2-C heated garage, 1.21 acres. \$219,000 ERA Dawson 417 Main St, Bgr 944-3361 TriciaQuirk.com



HOLDEN 3BR/1BA, 1976 RR updated less than 10 yrs ago w/wd flrs., new 3.5 car gar. New roof Sept. 2015. \$159,000 Gary Eastman, 944-0249, Better Homes and Gardens The Masiello Group



ISLAND FALLS 2 BR/1 BA, on one of, if not the most private lots on west end of Pristine 1,900 ac Pleasant Lake. Like new cond. w/lg deck, 16' plus cathedral ceiling, oversized loft, lg open kit/din/living rm. \$204,900 Scot Walker, 538-1765 www.mainlandbroker.com



LAKE VIEW PLT. Former Knights Landing Store w/gas pump, 274' of prime water frtge adjoining public boat landing on Schoodic Lake. 7 parcels - 4 camps, possibilities are endless! \$289,000 Vacationland Realty, 745-4522



LINCOLN 3 BR chalet w/open flr plan, unfinished basement for lots of storage space, 24x24 2 car gar., pvt yard. Lots to offer at an affordable price! \$114,900 The Fish Team, Carolyn Fish, 944-8466



ORRINGTON Nice 3br ranch, 2 car garage, pellet stove. \$139,800 Century 21 Queen City Real Estate, 416 Hammond St., Bangor 207-942-4618

REDUCED PRICE



ORRINGTON Well maint., 1 owner ranch. Oversized w/ heated gar. LR fp & basement w/dstove, 3BR, 2BA, open concept kit, LR & DR w/cathedral ceilings. \$200,000 Kurtis & Carissa Marsh, Realty of Maine 942-6310



SHERMAN 2 cabins, 30 acs, beautiful views of Mt. Katahdin, 28x32 cabin w/lofts, LR, BA, kit & 1 BR cabin w/ kit. & BA. Heat, water, septic & power. Small pond! \$55,000 Scot Walker, 538-1765 www.mainlandbroker.com



WESTON 3 BR/1 BA yr round w/150 ft Deering Lake, less than 20 Feet to the waters edge. Swim, boat, fish and re-lax! \$89,500 Scot Walker, 538-1765, mainlandbroker.com



WINTERPORT Quiet, 2 acs. Open flr plan. Kit. w/walk in pantry, convenient utility/laundry rm, lg LR w/newer pellet stove. Oversized 3 car gar. \$125,000 The Fish Team, Carolyn Fish, 944-8466

Manufactured Home Dirs. 320



MODULAR, DOUBLE-WIDE, SINGLE-WIDE
Land/Home Pkgs., Park Space, Quality Used Homes - Financing Avail. - MSHA Free delivery & set-up. Rte. 1A, Holden 989-1070 or 800-287-1071

Mobile/Mfd. Homes 325



ALL SET UP!! READY TO MOVE INTO!!
Holiday Park, Bangor New 2 & 3 Bedrooms, Appliances, Oak Cabinets.
Al Benner Homes, 989-1070



2 & 3 Bedrooms Available.
birchhillestates.com 207-949-4336

LOOK

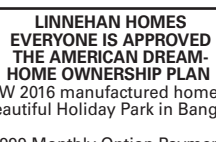
BANGOR
Ready to move in.
Owner financing available.
Call 285-3634 or 852-4116



BREWER Easy living in this 55+ park! Rent takes care of lawn & snow plowing. 1,216 sq ft, 3 BR, 2 BA, pond & 22x12 covered deck. \$30,000 Gary Eastman, 207-944-0249, Better Homes and Gardens The Masiello Group



EDDINGTON Open floor plan! 3 BR/2BA, hdwd flrs, 2 car gar. 12x16 shed, paved drive, close to all amenities, 1.75 ac lot, open deck. \$199,900 Dottie Brynton, Realty of Maine, 852-2233



LINNEHAN HOMES
EVERYONE IS APPROVED
THE AMERICAN DREAM-HOME OWNERSHIP PLAN
NEW 2016 manufactured homes in beautiful Holiday Park in Bangor.
\$999 Monthly Option Payment.
We can use your Tax Refunds of \$7000-\$10,000 down.
2 or 3 bedrooms available.
Call us for Specific Details on how we can help you with your AFFORDABLE Home Ownership Plans.
www.linnehanhomes.com 207-667-HOME (4663)



LOT MODEL CLEARANCE SALE!!
Buy Now and Save !! Discounted Pricing ... Free Delivery and Set-up!
Al Benner Homes 989-1071



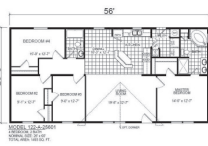
NEW 2015 EAGLE RIVER 1,280 sqft, 3 BR 2 BA. SAVE \$5,000. Was \$74,714 NOW ONLY \$69,714! Call 989-2337. Web www.showcasehomesofmaine.com!



PLYMOUTH 1992 m.h. in exc. cond., 3 BR, 2 BA, screened in deck, 2 car detached gar., close to interstate, priced to sell. \$79,900 John Voye, 852-6056, Realty of Maine



REDMAN 2015 24402 3 BR 2 BA 1,173 SF for only \$69,992 delivered & set up! Call 989-2337. Web www.showcasehomesofmaine.com!



REDMAN 2015 25601 4 BR 2 BA 1,493 SF for only \$78,707 delivered and set up! Call 989-2337 or andy@showcasehomesofmaine.com.



REDMAN 2015 46030 3 BR 2 BA 1,600 SF HICKORY KITCHEN for only \$86,991 delivered & set up! Call 989-2337 or andy@showcasehomesofmaine.com. Check out the web site www.showcasehomesofmaine.com



REDMAN 2015 46627 880 SF HICKORY KITCHEN for only \$51,907 delivered & set up! BEST SELLER!! Call 989-2337 www.showcasehomesofmaine.com

Shore Property 330



DEDHAM 985 Bald Mountain Road, 3BR/2.5BA, on Harriman Pond, fire-place, security system, carpet & hdwd floors, appliances incl. ctrl heating, deck/porch, 2 car gar., office/den, walk-out basement, \$269,000 Call 207-469-1046 or 207-469-1103 For more info. and photos use Listing ID 23951131 and go to
www.forsalebyowner.com



MOOSEHEAD LAKE PRICE SLASHED
1.59ac.
2 spaces 452ft lakefront.
Was \$229,900 Now \$179,900
Owner Financing
207-947-7957
www.wildernessrealty.com

Auto Dealers 355



EZ CAR CREDIT! YOU'RE APPROVED!
10 Toyota Sienna LE 4dr V6 AT 129K
10 Chevy Cobalt 2LT 4dr 4cyl AT 116K
10 Dodge Caliber Hatch 4cyl AT 113K
08 Mitsubishi Outlander AWD AT 116K
08 Subaru Forester 4cyl AWD AT 90K
07 Nissan Versa Hatch 4cyl AT 65K
06 GMC Envoy SLT 4WD V6 AT 112K
05 Toyota Camry XLE 4dr V6 AT 136K
05 Chevy Tahoe 4WD V8 AT 136K
2 mi. fr/Brewer Wal-Mart, RT1A, Holden



Specializing in
"Special Order Vehicles"
Stop by to order yours today!
Low Mileage



2012 CHRYSLER 300C AWD
Nav, pano roof, htd steering wheel & cup holders, 36k miles
WAS \$26,490 **NOW \$24,990**



2012 VOLKSWAGEN PASSAT
Leather, keyless entry, blue tooth, 29,000 Miles.
WAS \$16,990 **NOW \$15,490**

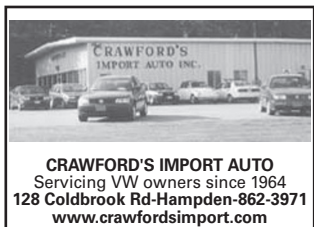


2013 HYUNDAI SONATA
Limited, sunroof, leather, keyless entry, full factory war., 26k miles
WAS \$18,990 **NOW \$17,990**



2014 FORD FUSION TITANIUM
AWD, nav, sunroof, full factory warranty, 22k miles
WAS \$25,490 **NOW \$23,990**

221 Dirigo Drive, Brewer
207-989-0300
www.dandsauto.com



CRAWFORD'S IMPORT AUTO
Servicing VW owners since 1964
128 Coldbrook Rd-Hampden-862-3971
www.crawfordsimport.com



VEAZIE 990-2206 / Corinna 278-2205
gerrysusedcars.net

Boats/Marine 360



1998 LUND SE PRO V 16.5 FT
1998 Johnson 115 motor, Shorelander trailer, fold away tongue, full canvas, 2 downriggers, fish finder, 2 live wells, radio, 2 spare props, turbo pro thrust 42 lb trolling moto, Excellent condition, runs great. \$7,000. Call 299-5186

CRUISING LOBSTER BOAT 28 ft. Built 1963 by Chummy Rich, Bass Harbor. Cedar on oak, 47 HP Isuzu diesel, in great shape, winterized and inside in Sedgwick. Priced to sell \$17,000 401-835-7220

LOOK



OPEN MOTOR LAUNCH 15' 1919 with 2 cyl Roberts engine, Reversing Pitch Propeller, Outboard Rudder, Rope & Pulley Steering. Hull is sound, needs TLC. Engine turns over easily, with good compression & is the original. 4 cycle and water cooled. Internal parts except crank and camshafts are Model T Ford. Sold "as is", including new Load Rite trailer. Delivered anywhere in Maine. This boat is fun to restore and even more fun to run! Asking \$4500, Come take a look and make an offer. 223-4411

SURPRISE! SAILING BOAT
Length overall: 14.58 ft. Beam 5.25 ft. Displacement 360 lbs. Draft: CB up 0.5 ft, down 3 ft 10 in. Sail area 110 sq ft. Rigging: fractional sloop. Material: fiberglass. Mast height: 20ft. Trailer. \$1,500. Call: 262-9011

Cars 365

BUY ME



CADILLAC 1978 COUPE DEVILLE Great cond, well maintained, inspected, only 58k orig mi., recently detailed, beautiful ocean mist green, \$12,000/B.O. 884-8535

CADILLAC 1992 ALLANTE 75,000 Original miles, perfect cond, Arctic white, Black int., loaded, never driven in winter. Was \$6500, now \$4500. Contact Lynn Merly. 884-9063

CADILLAC 1992 ALLANTE 75k miles, perfect cond., well equipped, white w/ black interior. \$5500. 207-326-9186



CHEVROLET 2000 BLAZER 4X4
201,000 miles, well taken care of. Can see at 300 Stillwater Avenue, Bangor. \$2,500. Call 207-947-2354



CHEVROLET 2006 HHR LT
Blue, exc. cond., heated leather, moon-roof, keyless entry, remote start, 32 mpg. 57k mi. \$7499/best offer. 944-7560.

CHEVROLET 2007 IMPALA LS
Florida car, beautiful condition, super clean interior, low mileage. \$5,200. Call 207-290-5071



CHEVY 07 IMPALA SS AT 104K
EZ CAR CREDIT! YOU'RE APPROVED!
===== GARRETSAUTO.COM =====
1A, 2mi fr/Brewer Walmart 989-6777



FORD 1955 CROWN VICTORIA
Older restoration. Works real good, dual exhaust, connie kit. 292 V8 AT. Located in St. George, NB, 20 min. from Calais border. \$17,000 or reasonable offer. Pictures available. Call 506-755-3130 or email mckaymaynard@gmail.com



FORD 1996 MUSTANG 2-door, Convertible, White/Tan, 6-cylinder, Automatic, 2WD, 145,000 Mi, Excellent condition. By Owner, 1996 Ford Mustang convertible in excellent shape, new paint job, upholstery, top and new engine 3 years ago; nice ride and stored winters \$4,500 207-259-2011



FORD 2000 WINDSTAR SE Burgundy/Gray, 86,000 Mi, Good condition. By Owner, 2000 Ford Windstar SE. Runs good New sticker.
Good tires. Several extras.
Call 852-0811 \$2,700 207-852-0811



PORSCHE 914 1.8L 1974
49,000 original miles, new sound system, AM/FM/CD/MP3 with remote, 5 new tires. \$6,000. Old Town, 469-8013



SUBARU 10 OUTBACK AWD AT 123K
EZ CAR CREDIT! YOU'RE APPROVED!
====>GARRETSAUTO.COM<====
1A, 2mi/fr Brewer Walmart 989-6777

BUY ME



TOYOTA 2010 AVALON LIMITED
71,000 miles, all power, many extras, 29 mpg highway, \$16,700.
Call 207-278-3778



TOYOTA 2010 COROLLA S
Power windows, sun roof, blue tooth, AM/FM/CD w MP3 input, cruise control, fog lamps, spoiler, auto, a/c. Just 77,500 miles inc. VinCheckPro report. No accidents/clear title. 36 mpg. Interior great, exterior great except the passengers side that had a close encounter with a couple deer. Kelly Blue Book \$8000. ONLY \$5000. Also 4 studded snow tires. 207-270-3737



VOLKSWAGEN 2007 JETTA
68k, loaded, auto, leather, roof, \$8,888
Crawford's Import Auto, 862-3971



VW 2000 JETTA 5 SPD
112k, new brakes/tires/exhaust. \$3950
Crawford's Import Auto, 862-3971



VW 2002 JETTA GL
112k, auto, inspected. \$3,737.
Crawford's Import Auto, 862-3971



VW 2014 PASSAT
5-spd, 25k mi., full factory warr. \$16,990
Crawford's Import Auto, 862-3971

Vans/Minivans 370

DODGE - 2000 FLORIDA Grand Caravan Zero rust, all power options, very nice, 165k mostly hwy. Needs brakes.
Reduced to \$2,000
Call for pictures 226-7540.

Sport Utility 380



CHEVY '11 MALIBU 1LT 4CYL
EZ CAR CREDIT! YOU'RE APPROVED!
====>GARRETSAUTO.COM<====
1A, 2mi fr/Brewer Walmart 989-6777



JEEP 2000 WRANGLER SAHARA
Green/Tan, 6-cyl, Auto AWD, Garaged, great condition. Many add-ons. 69,652 miles/Dual Top. Must see at \$10,500 Firm! 944-3536 trbonadio@gmail.com



TOYOTA 2013 VENZA LE
4 cyl. AT, FWD, 30 mpg, like new cond., very little winter use, 44,700 miles. \$16,000. 207-234-2134 or 207-356-2158

Pickups/4 Wheel Drives 385



CHEV COLORADO 05 271 4WD AT 138K
EZ CAR CREDIT! YOU'RE APPROVED!
====> GARRETSAUTO.COM <====
1A, 2mi fr/Brewer Walmart 989-6777

Tractors/Trailers/Trucks 390

TRUCK INSURANCE Save hundreds!
207-848-3326 or 1-800-365-7440. Russell Patten Insurance.

Sports/Recreation 450

HOLIDAY RAMBLER 2003
Neptune 38', air ride, diesel pusher, 300 Cummings, 29,243 miles, 2 slides, non smoker, no pets. **Now \$49,500.**
207-223-4922

Agriculture General 505

1ST CROP HORSE HAY \$3.50/bale. **COW HAY & MULCH** - \$3/bale. Delivery avail. Call 848-3141, 944-8756 or 848-3266

A HARVEST SPECIAL While they last!! 2 50bags of Potatoes for \$20.00 Yukon Superior Shepody Kennebec Gr Mt OSBORNE FAMILY FARM 305 Ridge Rd Charleston 207-285-0065

BUNKER SILO 80 ft. long, 8 ft. high sides, \$3900. 207-