

**VARNEY**  
FORD

# \$AVINGS

  
you can count on!


Go Further

FIRST YEAR MAINTENANCE FREE, EXCLUSIVE TO VARNEY FORD CUSTOMERS. ACTIVE &amp; RETIRED MILITARY RECEIVE AN ADDITION \$500 OFF ALL NEW FORD VEHICLES (EXCLUDING THE FORD FOCUS S)



## 2015 FORD F-150 SUPERCAB 4X4

ECO BOOST, AUTO, AIR,  
TILT, CC, BOXLINK, PW, PDL,  
E-LOC REAR, TOW PKG,  
ALLOY WHEELS & MORE!
**VARNEY  
PRICE \$30,995**
STOCK #11299  
MSRP \$30,995

## 2015 FORD F-250<sub>4X4</sub>

6.2L GAS, AUTO, AIR, SHIFT  
ON THE FLY 4X4, LOCKING  
REAR, TOW PKG, MOULDED  
STEPS, UPFIT SWITCHES,  
PLOW PREP & MORE!
**VARNEY  
PRICE \$30,795**
STOCK #11359  
MSRP \$37,485

## 2016 FORD FIESTA S

4 CYL, AUTO, AIR,  
PDL, CD, SYNC &  
MUCH MORE!
**VARNEY  
PRICE \$14,595**
STOCK #30548  
MSRP \$16,550

## 2016 FORD FUSION SE

2.0 ECO BOOST, AUTO,  
AIR, TILT, CC, PW, PDL,  
PWR SEAT, SYNC, SE  
APPEARANCE PKG,  
SPOILER & MUCH MORE!
**VARNEY  
PRICE \$23,295**
STOCK #3052  
MSRP \$27,835

## 2016 FORD FUSION TITANIUM AWD

2.0L ECOBOOST, AUTO, CLIMATE  
CONTROL, PWR WINDOWS &  
LOCKS, PWR SEAT, LEATHER  
INTERIOR, SYNC, ALLOYS,  
MOONROOF AND MUCH MORE!
**VARNEY  
PRICE \$30,599**
STOCK# 30514  
MSRP \$35,665

## 2016 FORD ESCAPE SE 4X4

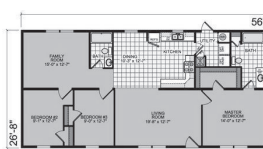
ECO BOOST, AUTO, AIR,  
PW, PDL, TILT, CC, CHROME  
PKG, LEATHER TRIMMED  
SEATS & MUCH MORE!
**VARNEY  
PRICE \$25,795**
STOCK #87909  
MSRP \$29,880

Prices subject to change without notice, prices include all applicable incentives, must finance through Ford Motor Credit Corporation. Tax and title extra, R.C.L. Lease Disclosure: All leases based on 10,500 miles per yr. Rates are for well qualified buyers. Buyers must qualify for competitive owner lease cash. First payment due at signing. See dealer for complete details.

**VARNEY FORD** Just off Exit 157 on I-95  
ROUTE 7, NEWPORT

**CALL DIRECT 368-4300 OR TOLL FREE 800-613-3673**  
1 MILE NORTH OF TRIANGLE ON RT. 7 • SALES OPEN: 8AM - 6PM DAILY, 8AM - 5PM SATURDAY • PARTS & SERVICE OPEN: 7:30AM - 5PM MONDAY - FRIDAY

**SHOWCASE  
HOMES  
of Maine**  
BREWER, ME 989-2337

**BANGOR** Immaculate 1,493 sq ft double  
wide 3 BR/2BA in Premier M.H. Park. In-  
cls. lg storage bldg, deck, LR, fam rm &  
Ctrl AC! Buy before March & get 6 mos.  
lot rent for FREE! \$82,000  
andy@showcasehomesofmaine.com,  
989-2337

**SHOWCASE  
HOMES  
of Maine**  
BREWER, ME 989-2337

**REDMAN 2016 25601** 3 BR 2 BA 1,493  
SF for only \$80,991 delivered and set up!  
Call 989-2337 or  
andy@showcasehomesofmaine.com.

**Auto Dealers 355**

**\*EZ CAR CREDIT! YOU'RE APPROVED!\***  
10 Buick LaCrosse CXL V6 AT 133K  
10 Subaru Impreza AWD 4cyl AT 116K  
10 Toyota Sienna LE 4dr V6 AT 129K  
10 Honda Accord EX 4dr 4cyl AT 130K  
09 Honda Fit Sport 4cyl AT 101K  
07 Toyota Camry LE 4DR 4CYL AT 149K  
07 Subaru Legacy GT AWD AT 141K  
07 Toyota Rav 4 v6 4wd at 155K  
05 Scion TC 3dr 4cyl AT 117K  
2 mi. fr/Brewer Wal-Mart, RT1A, Holden

**CRAWFORD'S IMPORT AUTO**  
Servicing VW owners since 1964  
128 Coldbrook Rd-Hampden-862-3971  
www.crawfordsimport.com

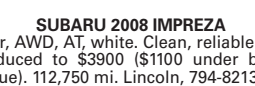
**HOT DEALS**  
**GERRY'S USED CARS, INC.**  
Buy & Pay Here Low Down  
Low Weekly Payments  
Veazie 990-2206 / Corinna 278-2205  
gerrysusedcars.net

**Boats/Marine 360**
**DINGHY**, Dyer-like, 8 1/2 ft, hard chine.  
Very stable, canvas rub rail, 3.3 hp Mer-  
cury motor. See in Winterport \$1,000  
OBO 207-223-4043

**Cars 365**

**CHEVY 04 SILVERADO 4WD AT 156K**  
\*EZ CAR CREDIT! YOU'RE APPROVED!\*Garrett's Auto Sales  
1A, 2mi fr/Brewer Walmart 989-6777

**JEEP 06 GR CHEROKEE 4WD AT 102K**  
\*EZ CAR CREDIT! YOU'RE APPROVED!\*Garrett's Auto Sales  
1A, 2mi fr/Brewer Walmart 989-6777

**SUBARU 06 IMPREZA OBS 4C AT 128K**  
\*EZ CAR CREDIT! YOU'RE APPROVED!\*Garrett's Auto Sales  
1A, 2mi fr/Brewer Walmart 989-6777

**SUBARU 2008 IMPREZA**  
4 dr, AWD, AT, white. Clean, reliable car.  
Reduced to \$3900 (\$1100 under book  
value). 112,750 mi. Lincoln, 794-8213

**View Our Complete  
Inventory at  
www.dandsauto.com**
**Spring Fever**

**2015 RAM 1500**  
Full Factory Warranty, Power Seat,  
21 MPG, 4X4, 5.7L V8, Loaded!  
17,000 Miles  
D&S Price \$30,990

**2013 CHEVROLET 1500**  
LT, 20" Wheels, Pwr Seat  
Tow Package, 4X4  
30,200 Miles  
D&S Price \$27,990

**2006 MERCEDES SL500**  
Hard Top Convertible  
Exceptional Top Down Cruising  
41,000 Miles  
D&S Price \$26,990

**2010 CHEVROLET CAMARO**  
RS Package, Paddle Shifters,  
Halo Headlights, 20" Wheels,  
53,000 Miles  
D&S Price \$16,990

**510 Wilson St., Brewer  
207-989-0300  
www.dandsauto.com**

celebrate  
**MAINE MAPLE SUNDAY**

Publishes: Sat., March 26, 2016  
Deadline: Mon., March 14, 2016  
Size & Cost: 3.38 in. x 2.5 in., \$50  
or 3.38 in x 4.5 in., \$150  
(includes ad being run in The Weekly  
classifieds on Thursday, March 24)

**Join Maine's maple producers each spring  
as they celebrate Maine Maple Sunday.**  
It's the day when sugar makers around the state open  
their doors of their sugarhouses for the public to join  
them in their rites of spring-making maple syrup.

Contact Laura  
207-990-8110  
or lgeorge  
@bangordailynews.com

**Simmons & Daughters  
Sugar House**  
381 Waymouth Rd., Brewer, ME 04860 • 342-0844  
Open Maple Sunday 10 to 5 Come join a  
traditional sugar house with a wood-fired evaporator.  
Enjoy ice cream with Maple Syrup.  
Maple Candy & Cotton Candy will be available for purchase.

**TIM'S SUGAR SHACK**  
Open House  
Sunday, March 25, 9 to 3  
Come and check out  
our sugar shack. Hand  
operated open boiling  
operation and maple  
syrup. Free syrup on  
ice cream.

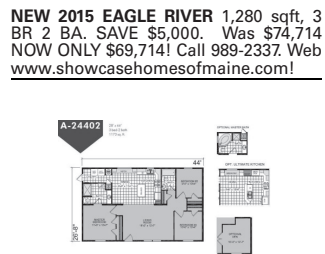
**Lucerne  
Maple Products**  
362 Lower Deham Road,  
Brewer • 943-5708  
Open 9 a.m. - 4 p.m.  
Sunday, March 23rd  
Ice cream with maple syrup  
785-4559

**Freyenhagen  
Farms**  
1st house on the right off Rte. 17,  
51 Wottons Mill Road, Union  
Open 9 a.m. - 4 p.m.  
Sunday, March 23rd  
Ice cream with maple syrup  
785-4559

**BOB'S SUGARHOUSE**  
OPEN HOUSE  
MARCH 22-23, 2016

**A sap-run is the  
sweet goodbye of  
winter.**


**EAGLE RIVER 56F478** 14 x 52(56) 2 BR 1  
BA for only \$39,900 delivered & set up!  
Call 989-2337 or  
info@showcasehomesofmaine.com.

**NEW 2015 EAGLE RIVER** 1,280 sqft, 3  
BR 2 BA. SAVE \$5,000. Was \$74,714  
NOW ONLY \$69,714! Call 989-2337. Web  
www.showcasehomesofmaine.com!

**REDMAN 2016 24402** 3 BR 2 BA 1,173  
SF for only \$71,913 delivered & set up!  
Call 989-2337. Web  
www.showcasehomesofmaine.com!

**REDMAN 2016 24402** 3 BR 2 BA 1,173  
SF for only \$71,913 delivered & set up!  
Call 989-2337. Web  
www.showcasehomesofmaine.com!