

VARNEY
FORD

\$SAVINGS

you can count on!


Go Further

FIRST YEAR MAINTENANCE FREE, EXCLUSIVE TO VARNEY FORD CUSTOMERS.

**2016 FORD
F150
SUPERCAB LARIAT 4x4**

**VARNEY
PRICE \$46,695**

5.0L V8/AUTO, FX4 OFF ROAD PKG, BLIS, REMOTE START, VOICE NAVIGATION, SONY SOUND, SYNC, TOW PKG W/PRO-TRAILER BACK UP ASSIST & MORE MSRP \$56120, STK#11378

**2016 FORD
ESCAPE
TITANIUM 4WD**

**VARNEY
PRICE \$32,995**

2.0L ECOBOOST/AUTO, CLIMATE CONTROL, LEATHER HEATED SEATS, VOICE NAVIGATION, SYNC, PARK ASSIST, TOW PKG, MOONROOF + MUCH MORE MSRP \$39,385 STK #87916

**2016 FORD
EDGE
SEL AWD**

**VARNEY
PRICE \$34,495**

ECOBOOST/AUTO, PWR WINDOWS/LOCKS, TILT WHEEL, CRUISE, HEATED LEATHER INTERIOR, SYNC 3, PANORAMIC MOON ROOF & MORE MSRP \$39,910, STK#87988

**2016 FORD
F250
SUPERCAB XLT 4x4**

**VARNEY
PRICE \$36,695**

6.2L GAS V8/AUTO, AC, PWR, PL, CD, CRUISE, TILT, FX4 OFF ROAD PKG, TOW PKG, SHIFT ON THE FLY 4x4, E-LOCK REAR END, REMOTE START & MORE MSRP \$44,455, STK#11332

**2016 FORD
FOCUS
SE**

**VARNEY
PRICE \$16,995**

2.0L/AUTO, AIR COND, TILT WHEEL, CRUISE, PWR WINDOWS/LOCKS, CD, SYNC, ALLOY WHEELS + MORE MSRP \$20,485 STK#30575

**2016 FORD
FIESTA
ST HATCHBACK**

**VARNEY
PRICE \$20,695**

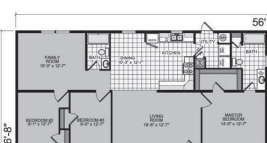
1.6L DOHC/6-SPEED, PWR, PL, ST RECARO SPORT SEAT PKG, TILT WHEEL, CRUISE, SYNC, CD, HEATED SEATS, GUNMETAL GREY, ALLOY WHEELS + MORE MSRP \$24,330 STK#30606

Prices subject to change without notice. prices include all applicable incentives. must finance through Ford Motor Credit Corporation. Tax and title extra. R.C.L. Lease Disclosure: All leases based on 10,500 miles per yr. Rates are for well qualified buyers. Buyers must qualify for competitive owner lease cash. First payment due at signing. See dealer for complete details.

VARNEY FORD Just off Exit 157 on I-95
ROUTE 7, NEWPORT

CALL DIRECT 368-4300 OR TOLL FREE 800-613-3673

1 MILE NORTH OF TRIANGLE ON RT. 7 • SALES OPEN: 8AM - 6PM DAILY, 8AM - 5PM SATURDAY • PARTS & SERVICE OPEN: 7:30AM - 5PM MONDAY - FRIDAY


KENDUSKEAG 3 BR/2 BA double wide on 1.65 acs. Well landscaped w/built in generator. 2 car detached garage. Sitting area in front and back to enjoy the property. Right away to Main road. \$119,900 The Nadeau / Bragdon Team, ERA Dawson, 723-1441 / 947-3663

**SHOWCASE
HOMES
of Maine**
BREWER, ME 989-2337

REDMAN 2016 25601 3 BR 2 BA 1,493 SF for only \$80,991 delivered and set up! Call 989-2337 or andy@showcasehomesofmaine.com.

Shore Property 330

ALEXANDER '08 cottage on shoreline of Barrows Lake! Beautiful & deck overhanging water! 900 +/- ft lake frontage & 5 acs. Guest cottage. \$155,000 Scot 538-1765 northernmainelandbroker.com

**BUY MAINE WILD
CARIBOU/CHESUNCOOK LAKE
YEAR ROUND PROPERTY!**
New construction, 2 BR, 1.5 bath on 11+ acre within the gate system. 998' private lakefront in NMW-T3R13. Includes bunkhouse, solar, generator, propane, septic, drilled well. \$385,000 Call owner for more info., 508-237-0785 (7a-7p)

REDUCED PRICE


DEDHAM 985 Bald Mountain Road, 3BR/2.5BA, on Harriman Pond, fire-place, security system, carpet & hwd floors, appliances incl., ctrl heating, deck/porch, 2 car gar., office/den, walk-out basement. \$259,000 Call 207-862-5699 or 617-645-7440 For more info, and photos use Listing ID 23951131 and go to
www.forsalebyowner.com

Auto Dealers 355

EZ CAR CREDIT! YOU'RE APPROVED!
12 Chevy Malibu 2LT 4dr AT 104K
11 Toyota Corolla S 5-Speed MT 96K
10 Buick LaCrosse CXL 4dr AT 133K
08 Chevy Equinox LT AWD V6 AT 139K
08 Pontiac Vibe 4cyl HB AT 78K
07 Subaru Impreza AWD 4cyl AT 138K
06 Toyota Highlander LTD AT 139K
05 Toyota Matrix XR HB 4cyl AT 132K
04 Jeep Wrangler 4WD 5SPD 159K
2 mi. fr/Brewer Wal-Mart, RT1A, Holden

Boats/Marine 360
GREAT BUY!
BASS BOAT
191 Champion, 200 hp Yamaha VMAX, Minn Kota 80 lb. thrust trolling motor, trailer, Lowrance Electronics 223-5112

Cars 365

2007 CHEVY IMPALA SS AT 115K
EZ CAR CREDIT! YOU'RE APPROVED!
==== GARRETTSAUTO.COM ====
1A, 2mi fr/Brewer Walmart 989-6777

2007 GMC YUKON DENALI AWD 129K
EZ CAR CREDIT! YOU'RE APPROVED!
==== GARRETTSAUTO.COM ====
1A, 2mi fr/Brewer Walmart 989-6777

HYUNDAI 2010 ELANTRA SE Beige/Beige, 38,000 Mi, Private Party, Automatic, with air and car starter. Great condition, low mileage! Orrington \$7,900 925-206-9162

GREAT BUY!
JEEP 2006 LIBERTY SPORT Red/Tan, 64,000 Mi, Private Party, Excellent condition. By Owner, Appraised at \$22,700. Asking \$16,500. Call Kevin 207-768-1123

NISSAN 1993 300ZX 2+2 2-door T top, 6 -cyl, Auto, 27,500 Mi, Excellent condition. By Owner, Appraised at \$22,700. Asking \$16,500. Call Kevin 207-768-1123

PONTIAC 08 GR. PRIX GXP V8 AT 127K
EZ CAR CREDIT! YOU'RE APPROVED!
==== GARRETTSAUTO.COM ====
1A, 2mi fr/Brewer Walmart 989-6777

SUBARU 2002 OUTBACK
Runs Great 167K. Head Gasket done. Blue. New Tires \$2000 or offer. 356-1420 or 989-2484

Vans/Minivans 370

CHRYSLER 2014 TOWN & COUNTRY Blue/Black, Exc cond. Very Cln. Stow/Go Factory wrnty A/C DVD new tires state inspection \$18,450 207-745-5195

DODGE - 2000 FLORIDA Grand Caravan Zero rust, all power options, very nice, 165k mostly hwy. Needs brakes. Reduced to \$2,000 Call for pictures 226-7540.

**View Our Complete
Inventory at
www.dandsauto.com**
Summer Savings

2005 CHEVROLET CORVETTE
Convertible, Flawless!
Velocity Yellow, 20,000 Miles
D&S Price: \$29,990

2015 RAM 1500
Big Horn Package, 21 MPG, 4X4
Bluetooth, Hemi, 23,000 Miles
D&S Price: \$30,990

2014 FORD ESCAPE
Titanium, AWD, Panoramic Roof
Navigation, Backup Camera, 31,000 Miles
D&S Price: \$22,990

2015 JEEP GRAND CHEROKEE
4X4, Limited, Leather, Htd Seats & Steering Wheel, Warranty, 38,000 Miles
D&S Price: \$30,990

**510 Wilson St., Brewer
207-989-0300
www.dandsauto.com**
Motorcycles/Mopeds 375

HARLEY-DAVIDSON 2015 TRIKE Red, 1,500 Mi., Red/Cayenne with gold pin striping. Cost new is \$35,235, and with extra is over \$36,000. Excellent condition with only 1500 miles. Call mornings from 8am-10am or evenings 7pm-10pm. If no answer, please leave a message with best call back time. Call me with your Best Offer! 207-564-0888

Sport Utility 380

CHEVY SILVERADO 05 4WD AT V8 180K
EZ CAR CREDIT! YOU'RE APPROVED!
==== GARRETTSAUTO.COM ====
1A, 2mi/fr Brewer Walmart 989-6777

Pickups/4 Wheel Drives 385
CHEVY 2007 SILVERADO 1500 LT 4dr, 4 WD, 8 cyl, 66,000 miles, spray bed liner, 4 new tires. Fiberglass cap incl. Garage kept. \$17,900 207-469-8980

Tractors/Trailers/Trucks 390
FORD 2001 F-650 XLT 60,223 Mi, 3116 Engine with Auto Trans, flatbed dump with 6yd hopper sander, Tenco plow and wing. \$12,500 or offer. 991-2391

TRUCK & CONTRACTORS INSURANCE
Save hundreds! 207-848-3326 or 1-800-365-7440. Russell Patten Insurance.

Sports/Recreation 450
2011 HEARTLAND SUNDANCE 2800RL 5TH WHL RV Offered for sale due to a death in the family is a so lightly used 32' 5th whl RV with 2 slides that some interior items still have the plastic from the factory on them. Has been towed less than 800 miles by 2 non smoking mature responsible adults. Speeded for winter use. Current owners purchased new with intentions of going south in the late fall for a few months. Unfortunately these plans are now not to be. The list of options are too many to list in this add. Please go to www.rvt.com and search for 2011 Heartland Sundance 5th whl RV. Call or text for more info. \$24,900.00 207-227-4190

GREAT BUY!

CLASS A, MOTOR HOME 2001, 36FT 2 large slide outs, V-10 ford engine, 39,000 miles. satellite dome,new tires. Never seen snow. \$21,500 207-944-2115

HOLIDAY RAMBLER 2003
Neptune 38', air ride, diesel pusher, 300 Cummings, 29,243 miles, 2 slides, non smoker, no pets. Now \$45,500. 207-223-4922

MOTOR HOME 2005 gulfstream 36' motorhome 2 slides, new couch & awning, like new, no smoke or pets \$39,000.00 OBO Call: 356-8255

SNOWMOBILE Ski Doo, 2011 Summit 800 E Tec, 163 inch x 2.25 Paddle track. Carbon fiber skid plates, 10 inch skis, two up seat, many extras. Light Use, Black. \$7,000 207-356-8699

WILDERNESS 5TH WHEEL 2006 Model: M-295RLS. 1 lg. slide, queen bed, like new. incl. dishes, cookware etc. NADA \$11K - \$13K. \$8850. 352-344-0484. See at Shady Oaks Campground Orland ME.

WILDERNESS 5TH WHEEL CAMPER 1998 27', gas/elec. refrigerator, battery/elec. lights, 13' slide out, 17' awning; screen room w/solid door, wooden steps, gas light, solar panel. Very clean, lots of storage. Very low hauling mileage. Asking \$7,000. 207-827-7066

Agriculture General 505
NEW HOLLAND 900 CHOPPER Rebuilt by Ingraham Ford, only used 1yr for 100ac. grass & 40ac. corn. has Metalalert II. 2 row corn head & 7' grass head, both rebuilt. Lg Fargo dump wagon. \$18,000 or offer. Rob 207-460-7762

QUALITY HAY FOR SALE
Timothy, Mixed Fine avail.
\$3.50 per bale
Call Russell at 944-8756 or 848-3141

WILD MAINE BLUEBERRIES Staples Homestead - pick/rake your own Aug 4 thru approx. Aug 21, M-F/10-5, Sa-Su/9-5, wx permitting. \$3.25/qt. Stockton Springs. On FB 207 567-3596, 567-3393

Farmers Market 506
ADAMS STRAWBERRY ACRES Route 15, Corinth. Pick your own Raspberries and Blueberries daily. 207-285-3324

BEETS
Table, canning or pickling. Langley's, off Outer Union St., Hermon. Closed Tuesdays and Fridays, open all other days. 848-3936

BLUEBERRIES
High bush. Sites Farm, Athens. Picking daily, 8 a.m.-6 p.m. 654-2063

BLUEBERRIES Maine Sweet & Wild. 24 Minnow Brook Rd Waltham Rte. 179. 8-5. Fresh qts, 5&10 lb boxes. 584-5593

Merchandise General 605
LINDA'S MAINE WILD BLUEBERRIES
Fresh, ready to freeze. \$6/qt. or \$60/flat of 12 qts. GAP cert. Rte 9, Clifton. Order Ahead. 207-949-1652

ASV SLEEP APNEA MACHINE with humidifier and unopened masks. New condition. Cost over \$6000, price negotiable. Call 207-478-0955

GE PROFILE ARCTICA REFRIGERATOR 24.5 cf, Top Freezer, Stainless Steel fridge, Water/ice maker, 68Hx31Wx32D, 10 yrs old, works great. We are downsizing. \$500 207-848-3088

LATHE TOOL 14 x 40, gear head w/read out and tooling. Exc. cond. \$4,500. 207-783-2811 or 207-318-9467